

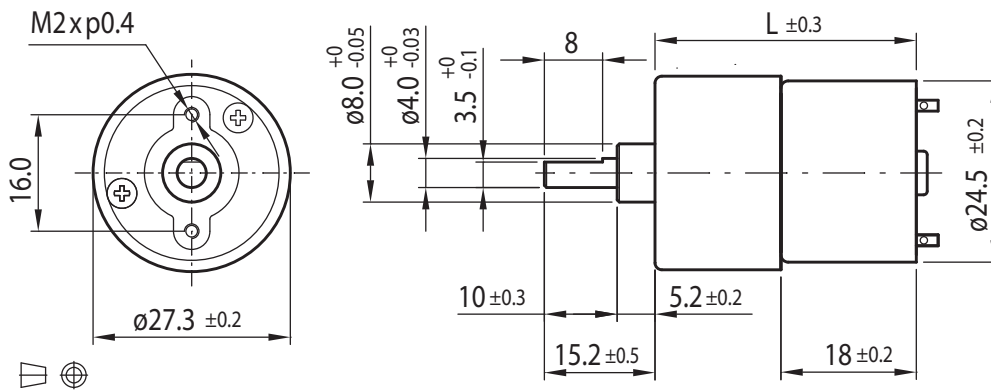
# DC Motor Spur Gearbox Type SZ27-DC25.18



## Gearmotor

Gear Ratio		10	15	21	30	44	60	77	100	112	150	170	200	250	320	360	500	700	800	900	1150
12V	Rated Torque (Ncm)	0.45	0.6	0.9	1.1	1.6	2.2	2.9	3.7	4.1	4.3	4.8	5.6	7.0	9.0	9.5	10.5	15	15	15	15
	Rated Speed (min <sup>-1</sup> )	390	260	180	130	88	65	51	39	35	25	22	19	15	12	11	8	6	5	5	4
24V	Rated Torque (Ncm)	0.45	0.6	0.9	1.1	1.6	2.2	2.9	3.7	4.1	4.3	4.8	5.6	7.0	9.0	9.5	10.5	15	15	15	15
	Rated Speed (min <sup>-1</sup> )	420	280	195	140	95	70	55	42	37	27	24	20	16	13	11	8	6	5	5	4
Length L (mm)		35.3	35.3	35.3	35.3	35.3	35.3	35.3	35.3	35.3	35.3	35.3	35.3	35.3	35.3	37.3	37.3	37.3	37.3	37.3	37.3

Rel. Humidity: 20 to 85% | Ambient Temp.: -10 to +60 °C | Net Weight max. 66g

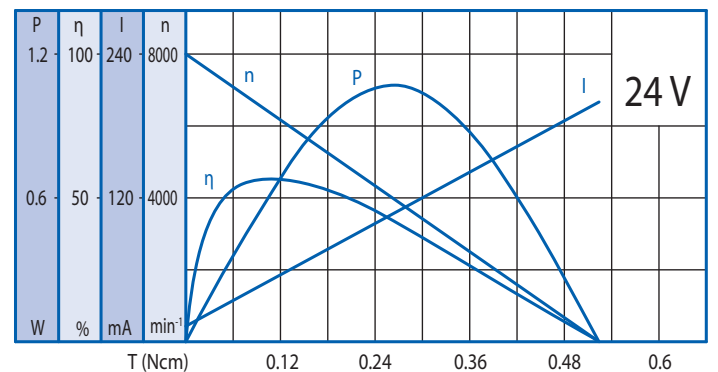
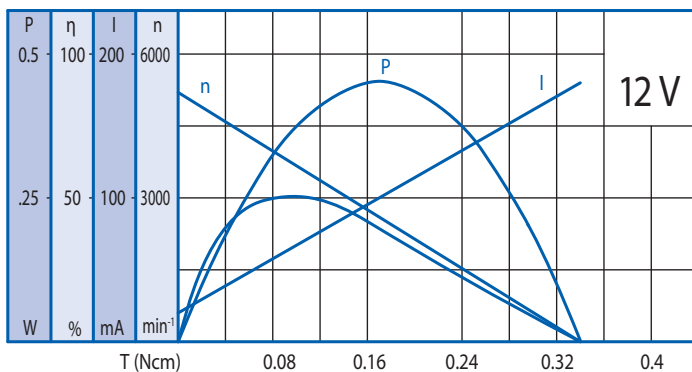


## Options

Encoder
Rear Shaft
EMC Filter
Leads
Connector
Special Shaft
Special Voltage

## Motor

Rated Voltage (V)	Rated Torque (Ncm)	Rated Speed (min <sup>-1</sup> )	Rated Current (mA)	No Load Speed (min <sup>-1</sup> )	No Load Current (mA)	Rated Power (W)
12	0.06	4000	≤60	5200	≤30	0.25
24	0.1	6400	≤60	8000	≤15	0.66



## Gearbox

Gear Ratio	10	15	21	30	44	60	77	100	112	150	170	200	250	320	360	500	700	800	900	1150
Max. Rated Torque (Ncm)	3	4	4	6	6	8	8	10	10	12	12	12	12	12	12	15	15	15	15	15
Max. Peak Torque (Ncm)	9	12	12	18	18	24	24	30	30	36	36	36	36	36	36	45	45	45	45	45

Radial Load (FR): 3N (10mm from face mounting) | Axial Load (FA): 2N