

BLDC Motor Planetary Gearbox Type PL28.30-BL28.38

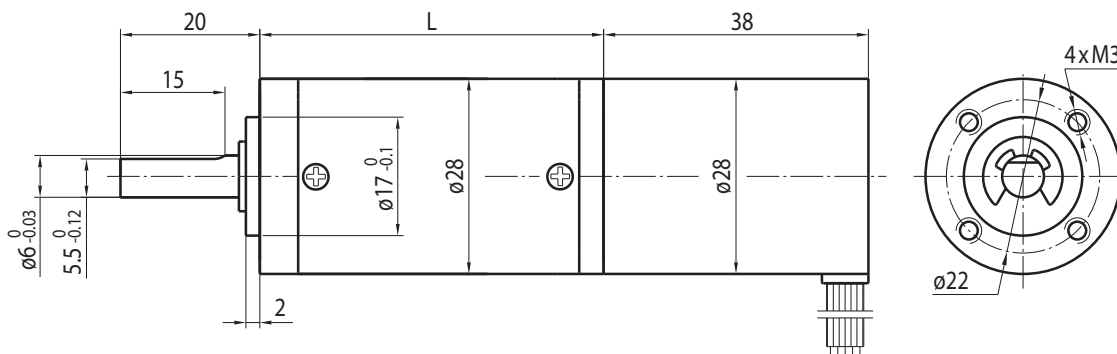
PowerTronic



Gearmotor

Gear Ratio		3.7	5.2	14	19	27	51	71	100	139	189	264	369	516	720
Type 2430	No Load Speed (min ⁻¹)	809	576	214	158	111	59	42	30	22	16	11	8.1	5.8	4.2
	Rated Speed (min ⁻¹)	539	386	143	105	74	39	28	20	14	11	7.6	5.4	3.9	2.8
	Rated Torque (Ncm)	1.7	2.3	5.7	7.7	11	19	26	37	51	61	86	120	170	200
	Peak Torque (Ncm)	100	100	350	350	350	750	750	750	750	900	900	900	900	900
Type 2440	No Load Speed (min ⁻¹)	1078	772	286	211	148	78	56	40	29	21	15	11	7.8	5.6
	Rated Speed (min ⁻¹)	728	521	193	142	100	53	38	27	19	14	10	7.3	5.2	3.8
	Rated Torque (Ncm)	2.3	3.3	7.9	11	15	26	36	51	71	86	120	170	230	300
	Peak Torque (Ncm)	100	100	350	350	350	750	750	750	750	900	900	900	900	900
No. of Stages		1	1	2	2	2	3	3	3	3	4	4	4	4	4
Length L (mm)		31	31	40.1	40.1	40.1	49	49	49	49	57.9	57.9	57.9	57.9	57.9

Rel. Humidity: 20 to 85% | Ambient Temp.: -10 to +60°C



Motor

Type	No. of Poles	No. of Phases	Rated Voltage (V)	No Load Speed (min ⁻¹)	Rated Speed (min ⁻¹)	Rated Torque (Ncm)	Peak Torque (Ncm)	Peak Current (A)	Rated Power (W)
2430	4	3	24	3000	2000	0.5	1.5	0.45	1
2440	4	3	24	4000	2700	0.7	2.1	0.6	1.9

Radial Load (FR): 35 N (10 mm from face mounting) | Axial Load (FA): 25 N

Connections

UL1007 AWG26	
Green	U
Red	V
Black	W
Yellow	Vcc (+5 to +24V)
Blue	Ha
Orange	Hb
Brown	Hc
White	GND

Options

Encoder
Rear Shaft
Connector
Special Shaft
Special Voltage

Ball Bearing