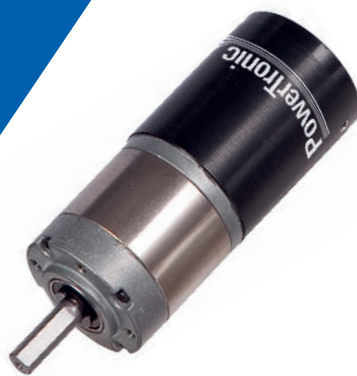


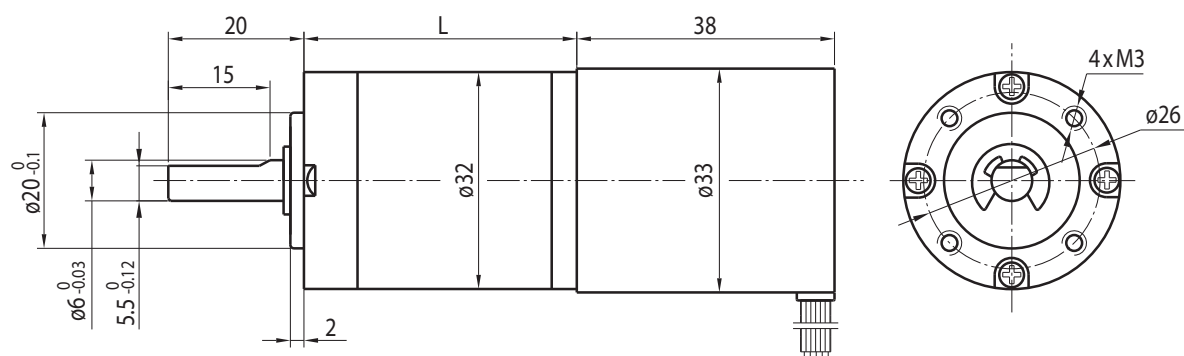
# BLDC Motor Planetary Gearbox Type PL32.30-BL33.38



## Gearmotor

Gear Ratio	3.7	5.2	14	19	27	51	71	100	139	189	264	369
No Load Speed (min <sup>-1</sup> )	1213	869	321	237	167	88	63	45	32	24	17	12
Rated Speed (min <sup>-1</sup> )	809	579	214	158	111	59	42	30	22	16	11	8.1
Rated Torque (Ncm)	7.3	10	25	34	48	82	110	160	220	270	300	300
Peak Torque (Ncm)	100	100	350	350	350	750	750	750	750	900	900	900
No. of Stages	1	1	2	2	2	3	3	3	3	4	4	4
Length L (mm)	25.7	25.7	32.8	32.8	32.8	39.7	39.7	39.7	39.7	46.6	46.6	46.6

Rel. Humidity: 20 to 85% | Ambient Temp.: -10 to +60 °C



## Motor

No. of Poles	No. of Phases	Rated Voltage (V)	No Load Speed (min <sup>-1</sup> )	Rated Speed (min <sup>-1</sup> )	Rated Torque (Ncm)	Peak Torque (Ncm)	Peak Current (A)	Rated Power (W)
4	3	24	4500	3000	2.2	6.6	0.64	7

Radial Load (FR): 35 N (10 mm from face mounting) | Axial Load (FA): 25 N

## Connections

UL1007 AWG26	
Green	U
Red	V
Black	W
Yellow	Vcc (+5 to +24V)
Blue	Ha
Orange	Hb
Brown	Hc
White	GND

## Options

Encoder
Rear Shaft
Connector
Special Shaft
Special Voltage

## Ball Bearing