

BLDC Motor with Integrated Electronics Planetary Gearbox Type PL35H-BL36.40

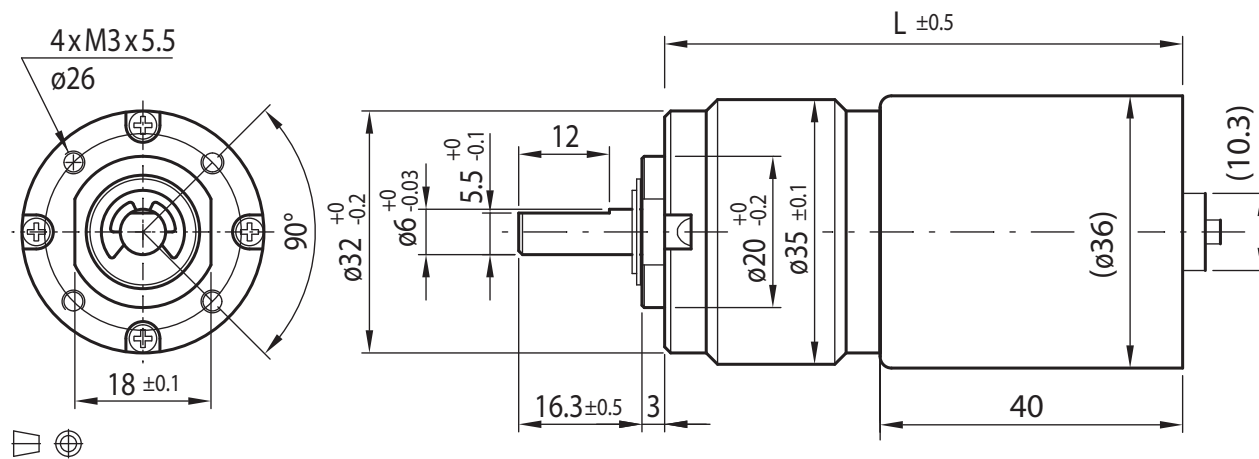
PowerTronic



Gearmotor

Gear Ratio	13	18	25	48	68	94	132	250	349	491	683
12V	Rated Torque (Ncm)	18	25	35	58	80	100	100	120	120	120
	Rated Speed (min ⁻¹)	150	109	75	41	29.5	21.5	15.5	8.4	6.5	4.4
24V	Rated Torque (Ncm)	22	31	44	72	80	100	100	120	120	120
	Rated Speed (min ⁻¹)	295	210	150	80	58	41.5	30	16.3	12	8.4
Length L (mm)	68.5	68.5	68.5	74.9	74.9	74.9	74.9	81.3	81.3	81.3	81.3

Radial Load (FR): 35 N (10 mm from face mounting) | Axial Load (FA): 25 N | Net Weight max. 355 g



Motor

Rated Voltage (V)	12	24
Rated Speed (min ⁻¹)	2000	3900
Rated Torque (Ncm)	2	2.5
Rated Current (mA)	≤ 1000	≤ 1230
No Load Current (mA)	≤ 350	≤ 400
No Load Speed (min ⁻¹)	2800	5000
Rated Power (W)	4.1	10

Rel. Humidity: 20 to 85 % | Ambient Temp.: - 10 to +60 °C

Options

Rear Shaft
Connector
Special Shaft
Special Voltage

Ball Bearing | Helical Gearing