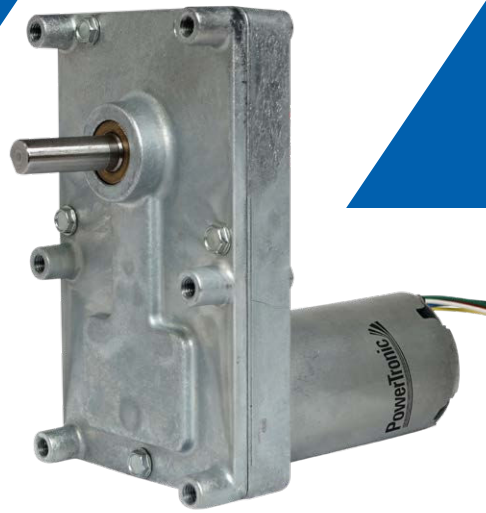


BLDC Motor Spur Gearbox Type SF70.119-BL42.75

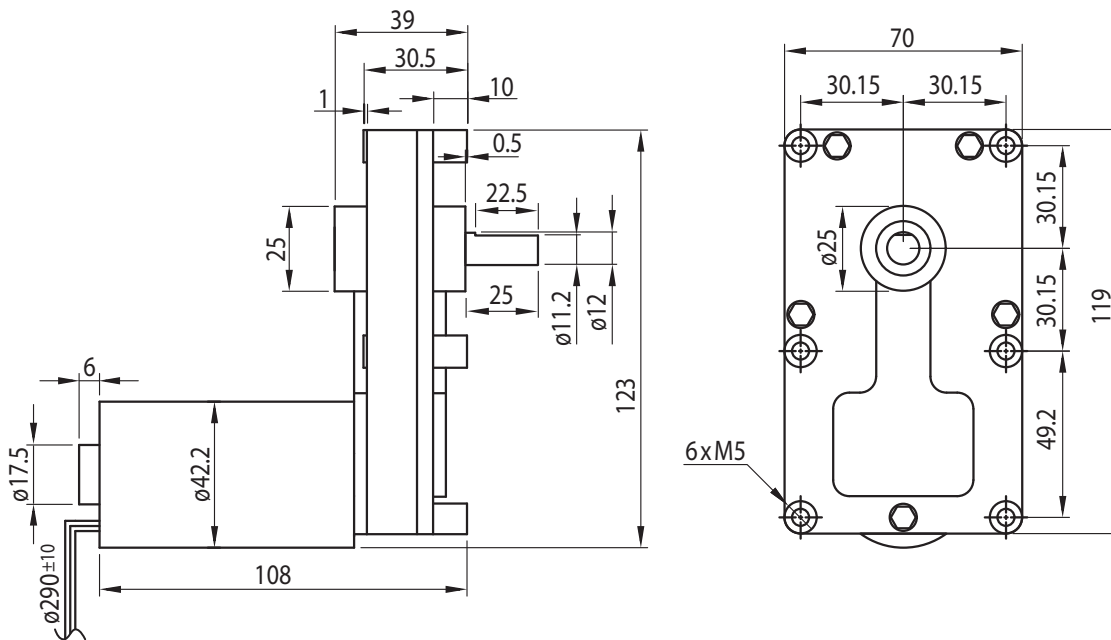
PowerTronic



Gearmotor

Gear Ratio	139	185	233	278	370	555	794
Rated Torque (Ncm)	710	945	1190	1420	1890	2836	3500
Rated Speed (min ⁻¹)	34	26	20.5	17.2	13	8.6	6

Rel. Humidity: 20 to 85 %
Ambient Temp.: -20 to +80 °C
Net Weight max. 1.2 kg



Motor

Rated Voltage (V)	No Load Speed (min ⁻¹)	No Load Current (A)	Rated Speed (min ⁻¹)	Rated Current (A)	Rated Torque (Ncm)	Rated Power (W)
24	5550	0.3	4770	1.9	7.3	36.5

Radial Load (FR): 200 N (10 mm from face mounting)
Axial Load (FA): 100 N

Options

Encoder
Rear Shaft
Leads
Connector
Special Shaft