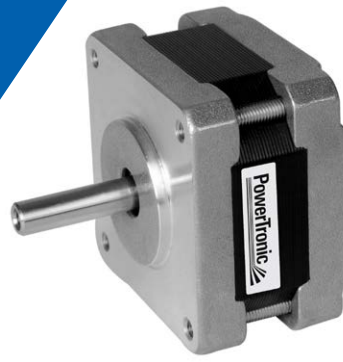


2-Phase Hybrid Stepper Motor Type SH39 (NEMA 16)



Technical Data

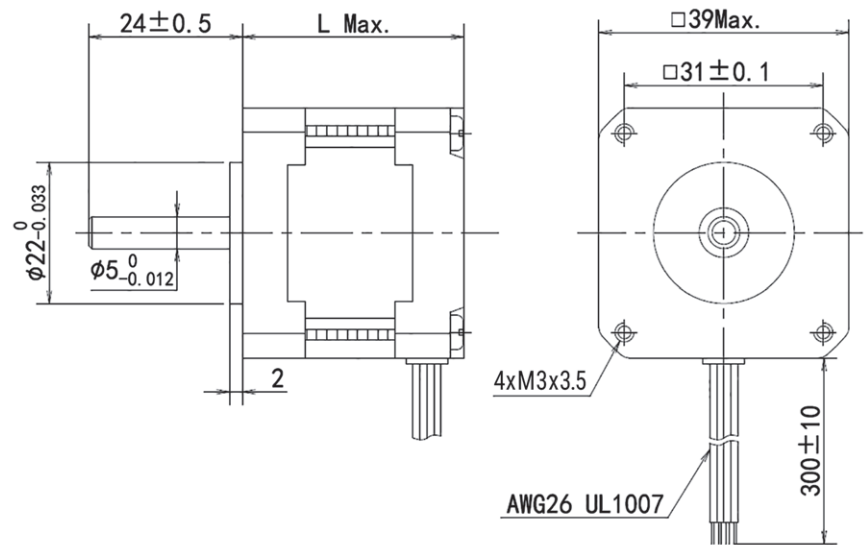
Model	Rated Current (A)	Resistance (Ω)	Inductance (mH)	Lead Wire	Holding Torque (Ncm)	Length L (mm)	Rotor Inertia (gcm ²)	Weight (kg)	Step Angle (°)
SH39.20-0401	0.42	18	12	4	8	20	12	0.1	1.8
SH39.26-2410	0.6	9	10	4	14	26	14	0.12	
SH39.34-3401	0.6	12	13	4	18	34	19	0.16	
SH39.34-3402	1.2	3	3	4	18	34	19	0.16	
SH39.40-4402	1.2	3.8	6.5	4	24	40	24	0.21	
SH39.40-4630	0.4	30	20	6	18	40	24	0.21	
SH39.48-8405	0.5	22	24	4	35	48	28	0.25	

Insulation Resistance: min. 100 M Ω (at 500VDC)
Dielectric Strength (1 min): 500 VAC

Operating Temp.: -20 to +50 °C
Insulation Class: B (130 °C)
Permissible Temp. Rise: 80 °C

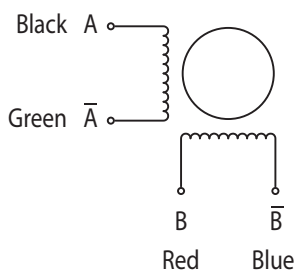
Options

Step Sizes 0.36 and 0.9°
5 Phases
Encoder
Special Shaft
Rear Shaft Extension
Extension Cable
Connector

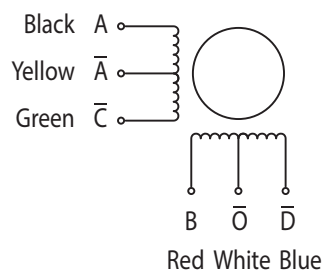


Connections

Bi-Polar



Uni-Polar



Further winding configurations can be supplied upon request.