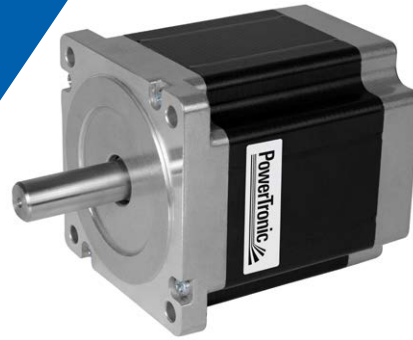


2-Phase Hybrid Stepper Motor Type SH86H (NEMA 34)



Technical Data

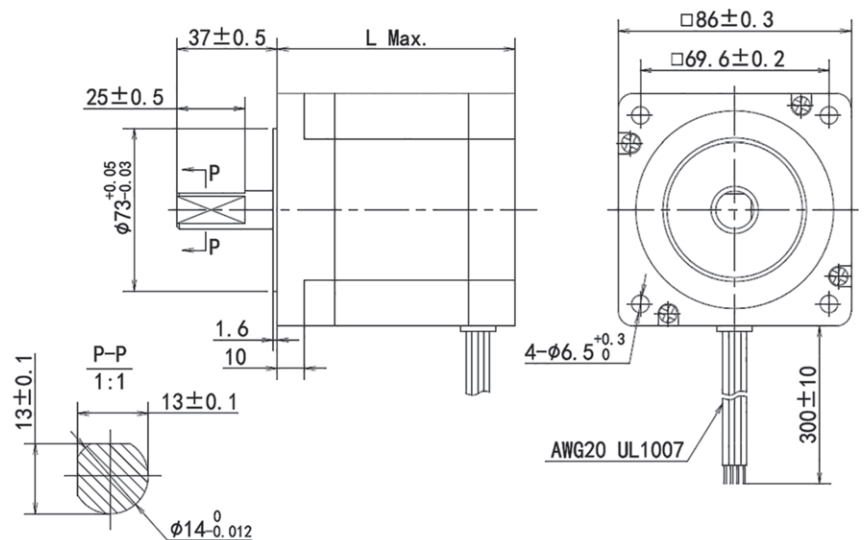
Model	Rated Current (A)	Resistance (Ω)	Inductance (mH)	Lead Wire	Holding Torque (Ncm)	Length L (mm)	Rotor Inertia (gcm ²)	Weight (kg)	Step Angle (°)
SH86H.66-6803	2.7	1.1	3.5	8	220	66	0.85	2.0	1.8
SH86H.78-8801	4.0	0.7	3.0	8	300	78	1.05	2.5	
SH86H.98-9802	5.0	0.6	2.4	8	490	98	1.55	3.0	
SH86H.114-4801	4.0	1.1	5.5	8	580	114	1.8	3.5	
SH86H.126-2401	5.6	0.6	5.8	4	890	126	2.2	3.9	
SH86H.126-2802	5.0	0.75	3.4	8	640	126	2.2	3.9	
SH86H.150-5402	7	0.4	5.2	4	1200	150	2.5	4.2	
SH86H.150-5802	5	0.8	5.2	8	850	150	2.5	4.2	

Insulation Resistance: min. 100 M Ω (at 500VDC)
Dielectric Strength (1 min): 500VAC

Operating Temp.: -20 to +50 °C
Insulation Class: B (130 °C)
Permissible Temp. Rise: 80 °C

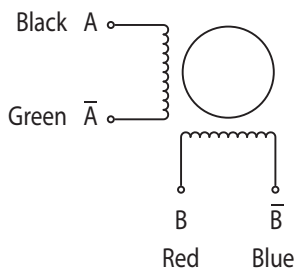
Options

Step Sizes 0.72 and 3.6°
3 and 5 Phases
Encoder
Special Shaft
Rear Shaft Extension
Extension Cable
Connector

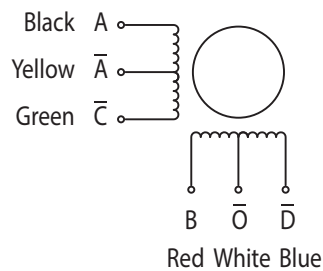


Connections

Bi-Polar



Uni-Polar



Further winding configurations can be supplied upon request.