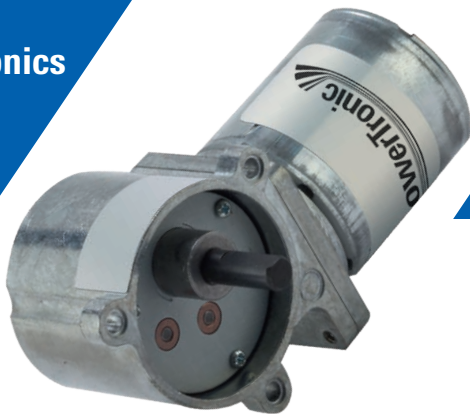


BLDC Motor with Integrated Electronics

Worm Gearbox

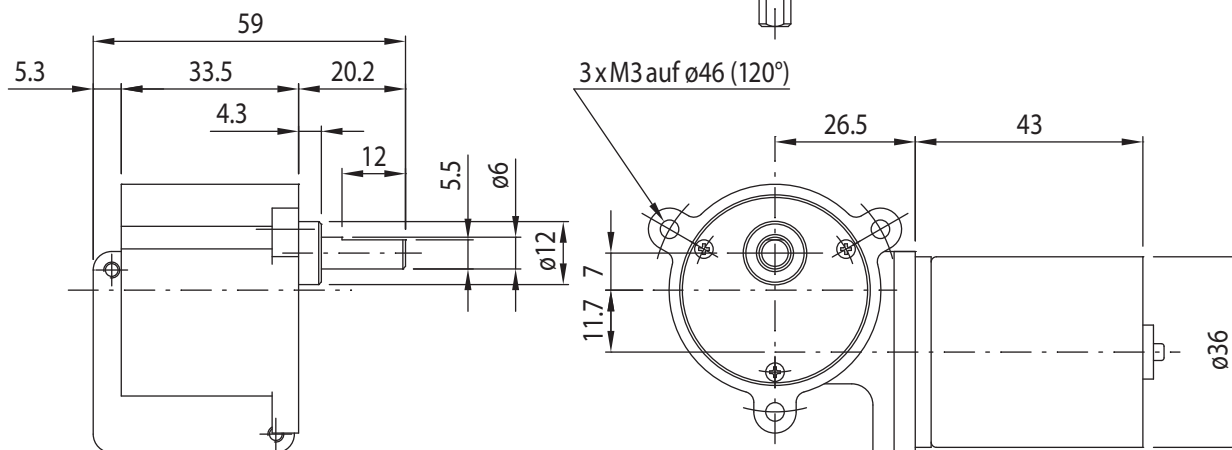
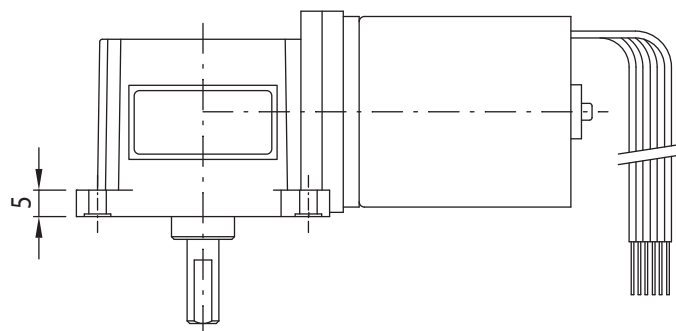
Type SN19-BL36.43



Gearmotor

Gear Ratio	25	30	50	60	75	100	125	150	200	250	300	375	500	600	750	900	1050	1350	1500	
12V	Rated Torque (Ncm)	30	36	60	60	60	60	60	60	60	60	60	60	60	60	60	60	60	60	60
	Rated Speed (min ⁻¹)	180	150	90	75	60	45	36	30	23	18	15	12	9	8	6	5	4.2	3.3	3
24V	Rated Torque (Ncm)	50	60	60	60	60	60	60	60	60	60	60	60	60	60	60	60	60	60	60
	Rated Speed (min ⁻¹)	156	130	78	65	52	39	31	26	20	16	13	10	8	7	5	4	3.7	2.8	2.6

Radial Load (FR): 10 N (10 mm from face mounting) | Axial Load (FA): 10 N | Net Weight max. 290 g



Motor

Rated Voltage (V)	12	24
Rated Speed (min ⁻¹)	4500	3900
Rated Torque (Ncm)	1.5	2.5
Rated Current (A)	1.2	0.8
No Load Current (mA)	500	300
No Load Speed (min ⁻¹)	5300	5000

Rel. Humidity: 20 to 85% | Ambient Temp.: - 10 to +60 °C

Options

Rear Shaft
Connector
Special Shaft
Special Voltage