

# DC Motor

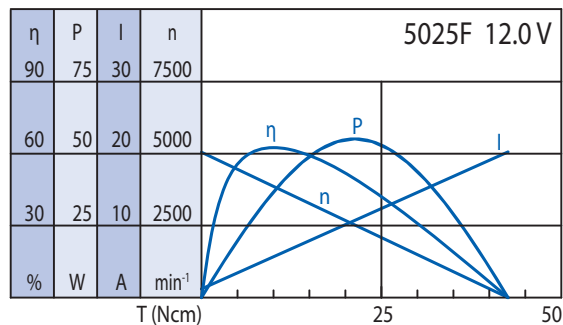
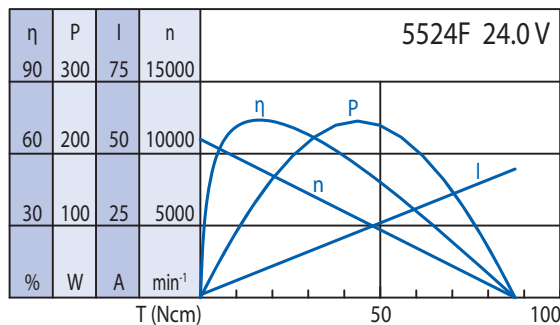
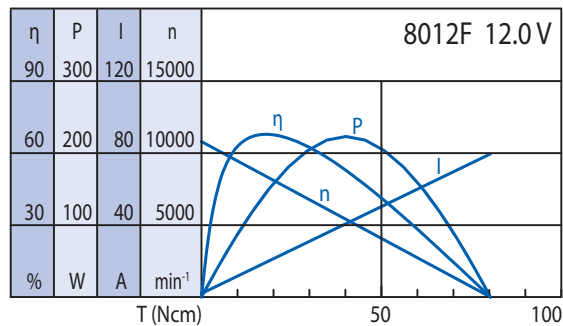
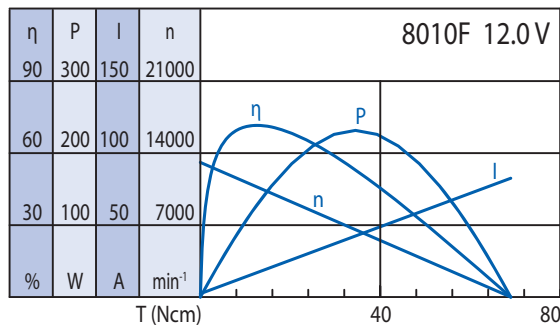
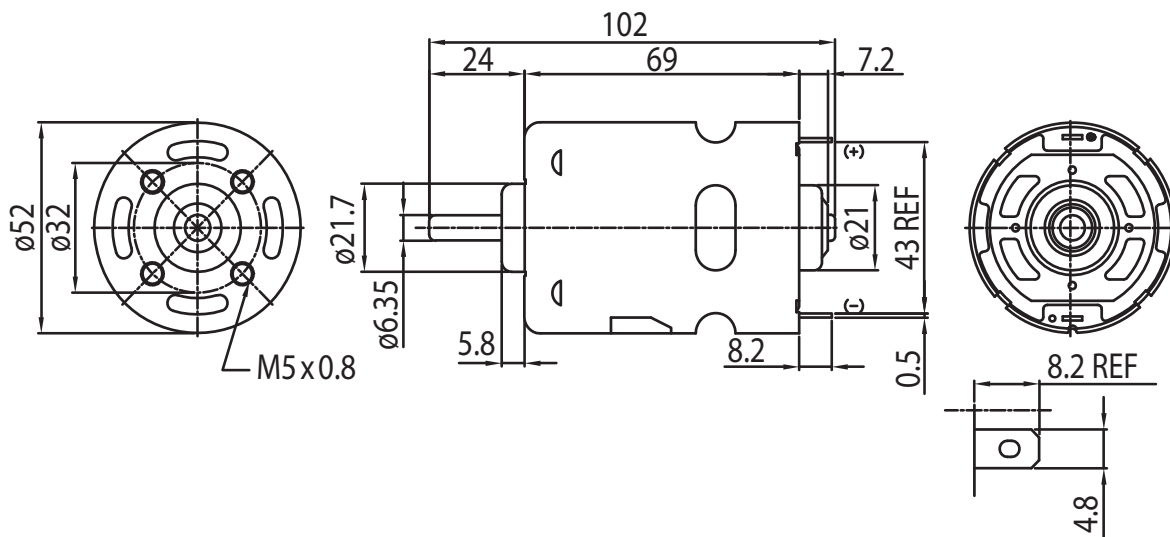
## Type DC52.69



### Technical Data

Model	Rated Voltage (V)	No Load Speed (min <sup>-1</sup> )	No Load Current (A)	Rated Speed (min <sup>-1</sup> )	Rated Current (A)	Rated Torque (Ncm)	Rated Power (W)	Efficiency (%)	Stall Current (A)	Stall Torque (Ncm)
8010F	12.0	13100	2.3	11100	11.9	8.8	102	72	83	67.7
8012F	12.0	10800	2.0	9000	13.1	11.3	107	68	80	78.7
5524F	24.0	11000	0.95	9700	6.3	11.0	112	74	45	85.8
5025F	12.0	5050	1.2	4000	4.8	8.4	35	63	20	41.8

Ambient Temp.: -10 to +60°C | Net Weight max. 480g



### Options

EMC Filter
Leads
Connector
Special Shaft
Special Voltage
Ball Bearing
Encoder