

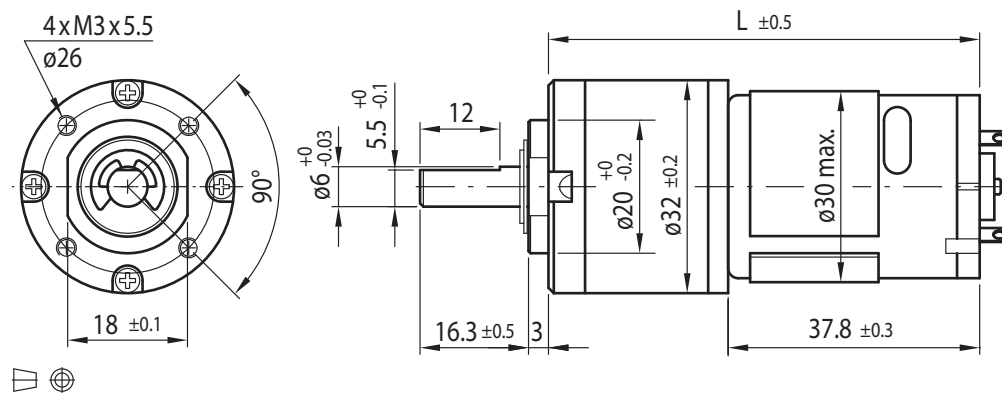
DC Motor Planetary Gearbox Type PL32-DC30.38



Gearmotor

Gear Ratio	5	14	19	27	35	51	71	100	139	189	264	516	721	939	
12V	Rated Torque (Ncm)	3	7.5	10	14	19	23	33	46	65	73	100	120	120	120
	Rated Speed (min ⁻¹)	995	373	270	195	150	104	74	53	38	28	20	11	8	6
24V	Rated Torque (Ncm)	3	7	10	14	18	22	31	44	61	69	97	120	120	120
	Rated Speed (min ⁻¹)	990	370	265	191	150	103	74	53	38	28	20	11	8	6
Length L (mm)	58.4	64.8	64.8	64.8	64.8	71.2	71.2	71.2	71.2	77.6	77.6	77.6	77.6	77.6	

Rel. Humidity: 20 to 85% | Ambient Temp.: -10 to +60°C | Net Weight max. 245g

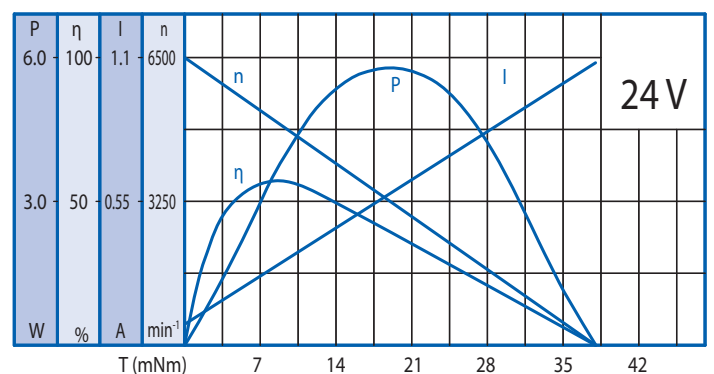
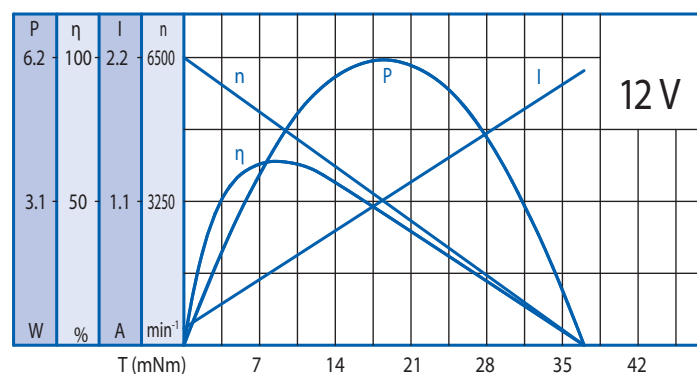


Options

Encoder
Rear Shaft
EMC Filter
Leads
Connector
Special Shaft
Special Voltage
Helical Gearing

Motor

Rated Voltage (V)	Rated Torque (Ncm)	Rated Speed (min ⁻¹)	Rated Current (mA)	No Load Speed (min ⁻¹)	No Load Current (mA)	Rated Power (W)
12	0.78	5290	≤ 530	6500	≤ 150	4.22
24	0.74	5250	≤ 250	6500	≤ 85	3.97



Gearbox

Gear Ratio	5	14	19	27	35	51	71	100	139	189	264	516	721	939
Max. Rated Torque (Ncm)	20	40	40	60	60	80	80	100	100	120	120	120	120	120
Max. Peak Torque (Ncm)	60	120	120	180	180	240	240	300	300	360	360	360	360	360

Ball Bearing

Radial Load (FR): 35 N (10mm from face mounting) | Axial Load (FA): 25 N