

DC Motor Planetary & Bevel Gearbox Type PL32R-DC30.47

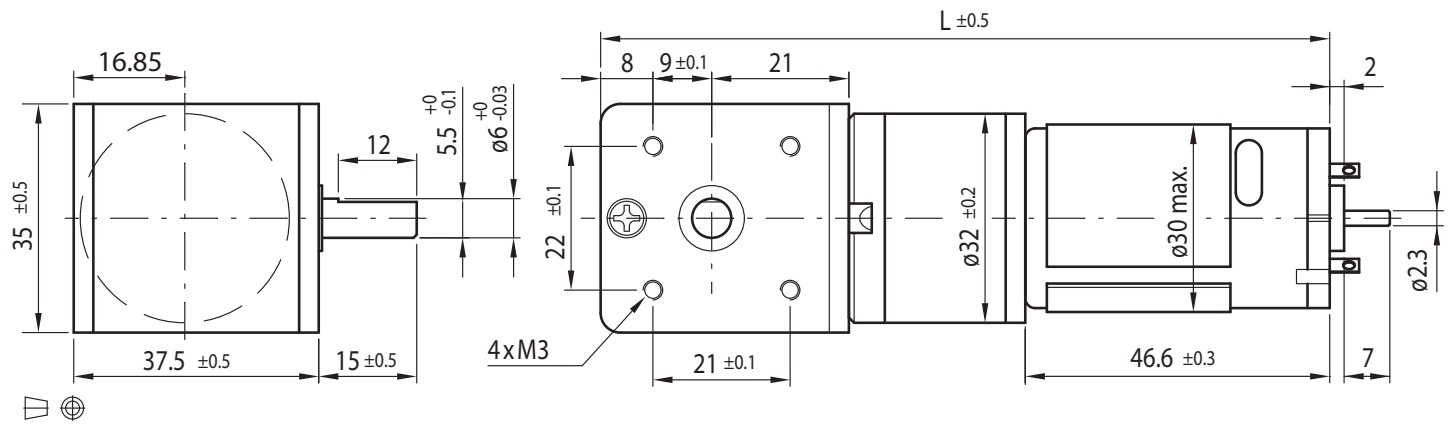
PowerTronic



Gearmotor

Gear Ratio	5	14	19	27	35	51	71	100	139	189	264	516	721	939
12V	Rated Torque (Ncm)	4	9	12	17	23	28	39	54	76	83	116	120	120
	Rated Speed (min ⁻¹)	1140	430	310	220	170	116	83	60	43	32	24	13	10
24V	Rated Torque (Ncm)	4.7	11	15	21	27	33	46	64	90	98	120	120	120
	Rated Speed (min ⁻¹)	1170	445	320	229	176	120	87	62	45	34	25	13	10
Length L (mm)		105.2	111.6	111.6	111.6	111.6	118.0	118.0	118.0	118.0	124.4	124.4	124.4	124.4

Rel. Humidity: 20 to 85% | Ambient Temp.: -10 to +60°C | Net Weight max. 410g

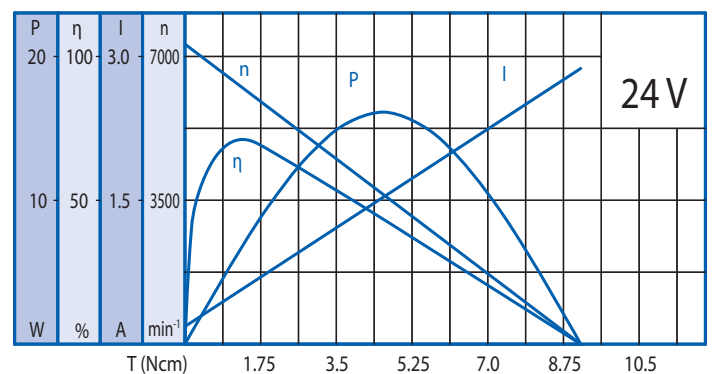
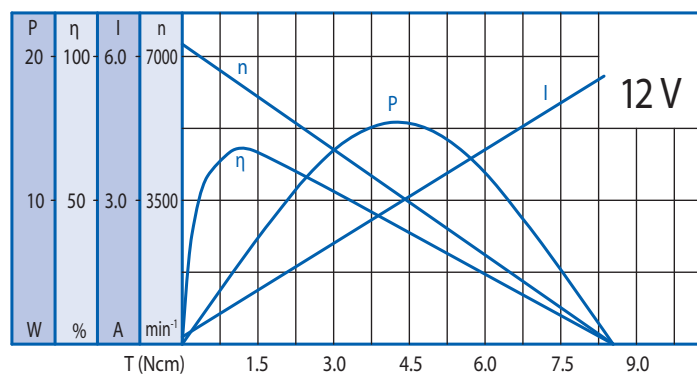


Options

Connector	Special Voltage	Encoder	Helical Gearing
EMC Filter	Special Shaft	Leads	

Motor

Rated Voltage (V)	Rated Torque (Ncm)	Rated Speed (min ⁻¹)	Rated Current (mA)	No Load Speed (min ⁻¹)	No Load Current (mA)	Rated Power (W)
12	1.1	5950	≤900	7300	≤150	7
24	1.3	6160	≤500	7300	≤80	8.5



Gearbox

Gear Ratio	5	14	19	27	35	51	71	100	139	189	264	516	721	939
Max. Rated Torque (Ncm)	20	40	40	60	60	80	80	100	100	100	120	120	120	120
Max. Peak Torque (Ncm)	60	120	120	180	180	240	240	300	300	300	360	360	360	360

Ball Bearing

Radial Load (FR): 35 N (10 mm from face mounting) | Axial Load (FA): 25 N