

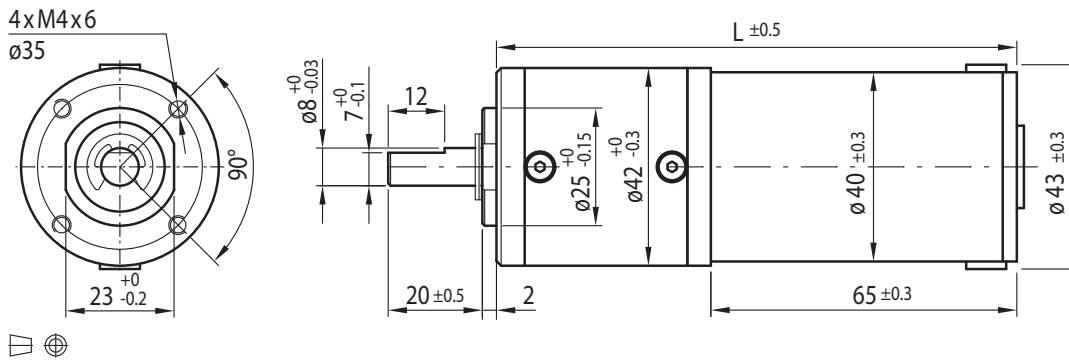
DC Motor Planetary Gearbox Type PL42H-DC40.65



Gearmotor

Gear Ratio		15	17	20	25	51	64	84	100	120	180	222	294	500	600	720	1062	1470	2500	3000	3600
12V	Rated Torque (Ncm)	44	50	60	76	130	160	180	200	200	250	250	300	300	300	300	300	300	300	300	300
	Rated Speed (min ⁻¹)	250	220	187	148	73	59	45	38	32	21	17	13	8	7	6	4	3	2	1	1
24V	Rated Torque (Ncm)	32	41	49	62	100	130	170	200	200	250	250	300	300	300	300	300	300	300	300	300
	Rated Speed (min ⁻¹)	255	223	190	150	74	59	45	38	32	21	17	13	8	7	6	4	3	2	1	1
Length L (mm)		104.2	104.2	104.2	104.2	110.9	110.9	110.9	110.9	110.9	117.6	117.6	117.6	117.6	117.6	117.6	124.6	124.6	124.6	124.6	124.6

Rel. Humidity: 20 to 85% | Ambient Temp.: -10 to +60 °C | Net Weight max. 636g

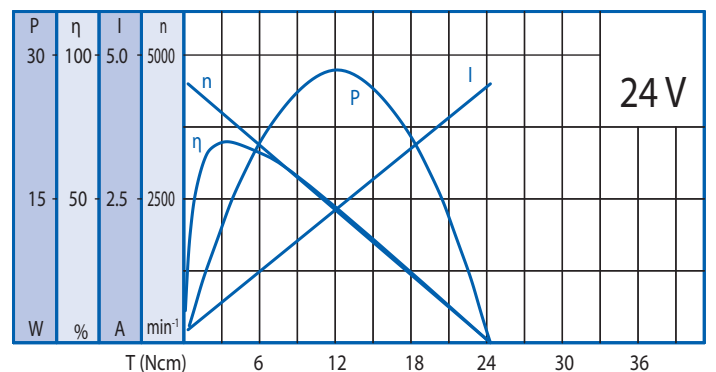
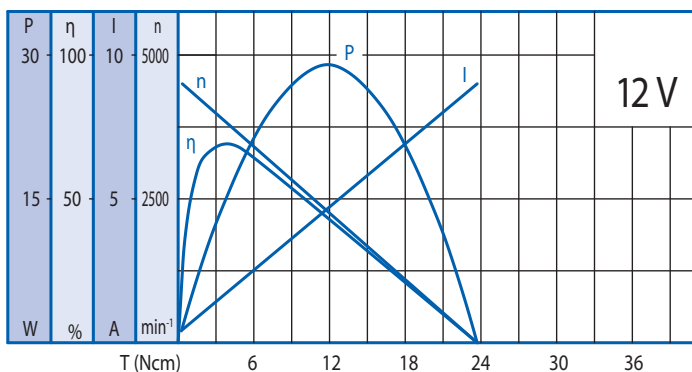


Options

Hi Power DC Motor
Encoder
Rear Shaft
EMC Filter
Leads
Connector
Special Shaft
Special Voltage

Motor

Rated Voltage (V)	Rated Torque (Ncm)	Rated Speed (min ⁻¹)	Rated Current (mA)	No Load Speed (min ⁻¹)	No Load Current (mA)	Rated Power (W)
12	4.3	3750	≤2000	4500	≤500	16.56
24	3.5	3800	≤820	4500	≤220	13.65



Gearbox

Helical Gearing

Gear Ratio	15	17	20	25	51	64	84	100	120	180	222	294	500	600	720	1062	1470	2500	3000	3600
Max. Rated Torque (Ncm)	80	80	80	80	180	180	180	200	200	250	250	300	300	300	300	300	300	300	300	300
Max. Peak Torque (Ncm)	240	240	240	240	540	540	540	600	600	750	750	900	900	900	900	900	900	900	900	900

Ball Bearing

Radial Load (FR): 80 N (10 mm from face mounting) | Axial Load (FA): 30 N