

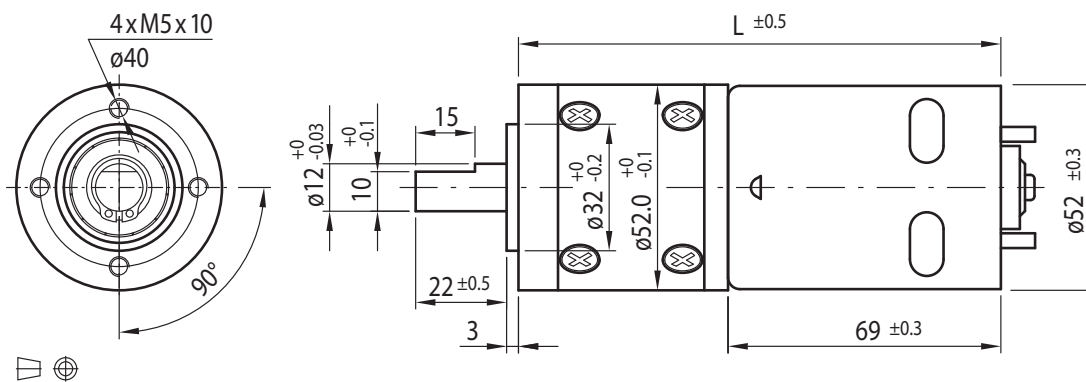
DC Motor Planetary Gearbox Type PL52-DC52.69



Gearmotor

Gear Ratio	3	4	12	15	19	43	53	66	81	100	113	150	230	285	353	488	546	676
12V	Rated Torque (Ncm)	21	26	66	80	101	198	245	300	375	460	520	570	885	1000	1000	1000	1000
	Rated Speed (min ⁻¹)	1470	1188	420	339	274	120	97	78	63	51	45	34	22	18	14.5	10.5	9.4
24V	Rated Torque (Ncm)	22	28	69	86	107	209	259	320	397	490	550	610	937	1000	1000	1000	1000
	Rated Speed (min ⁻¹)	1423	1149	406	328	265	116	94	75	61	49	44	33	21.6	17.4	14	10	9
Length L (mm)	122	122	137.5	137.5	137.5	153	153	153	153	153	153	168.5	168.5	168.5	168.5	168.5	168.5	168.5

Rel. Humidity: 20 to 85% | Ambient Temp.: -10 to +60°C | Net Weight max. 1.5kg

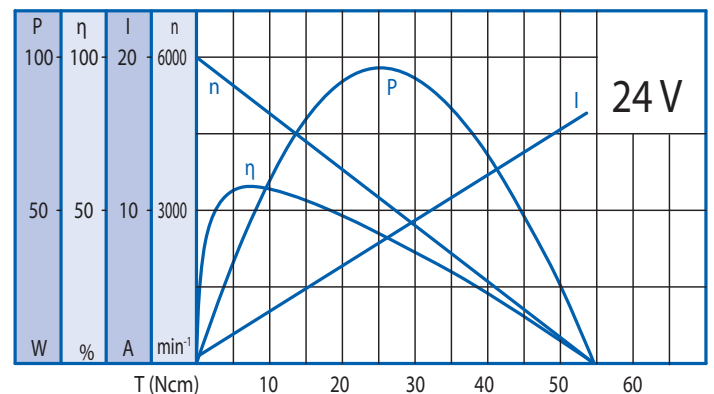
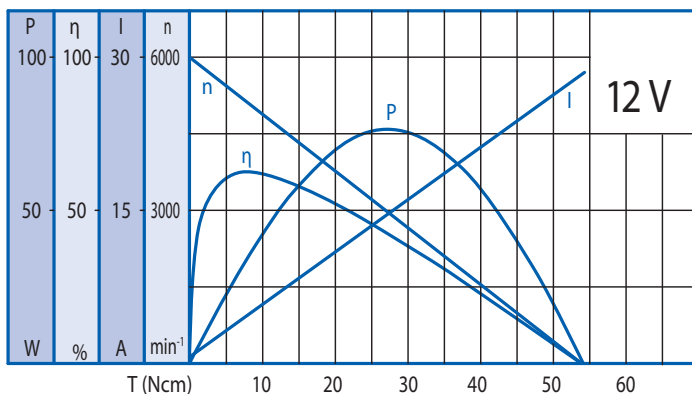


Options

Encoder
Rear Shaft
EMC Filter
Leads
Connector
Special Shaft
Special Voltage

Motor

Rated Voltage (V)	Rated Torque (Ncm)	Rated Speed (min ⁻¹)	Rated Current (mA)	No Load Speed (min ⁻¹)	No Load Current (mA)	Rated Power (W)
12	7.5	5058	≤5800	6000	≤1550	39.8
24	8.0	4983	≤3600	6000	≤600	41.7



Gearbox

Gear Ratio	3	4	12	15	19	43	53	66	81	100	113	150	230	285	353	488	546	676
Max. Rated Torque (Ncm)	100	100	300	300	500	1000	1000	1000	1000	1000	1000	1000	1000	1000	1000	1000	1000	1000
Max. Peak Torque (Ncm)	300	300	900	900	1500	3000	3000	3000	3000	3000	3000	3000	3000	3000	3000	3000	3000	3000

Ball Bearing

Radial Load (FR): 200N (10mm from face mounting) | Axial Load (FA): 100N