

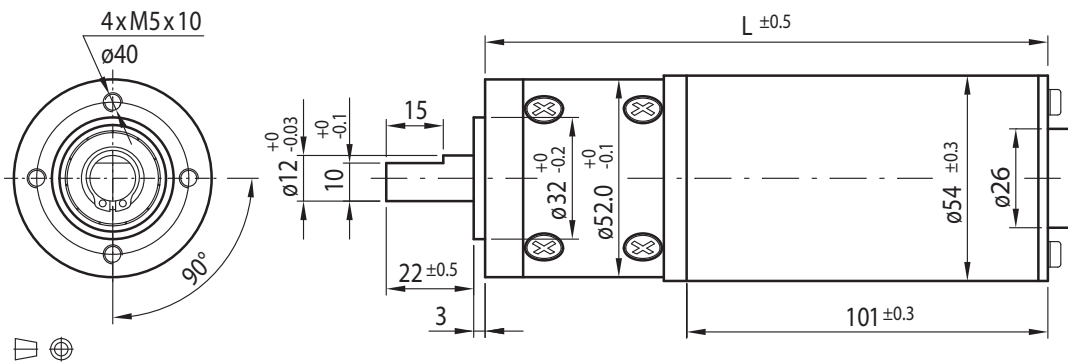
DC Motor Planetary Gearbox Type PL52H-DC54.101



Gearmotor

Gear Ratio	4	13	15	19	46	57	67	82	98	114	161	207	288	357	494	552	684
12V	Rated Torque (Ncm)	28	80	95	110	240	300	350	440	520	610	720	930	1000	1000	1000	1000
	Rated Speed (min ⁻¹)	960	275	235	190	78	63	54	44	37	32	23	17	13	11	8	7
24V	Rated Torque (Ncm)	39	110	130	170	350	440	510	640	760	880	1000	1000	1000	1000	1000	1000
	Rated Speed (min ⁻¹)	940	270	230	186	77	62	53	43	36	31	22	17	13	11	8	7
Length L (mm)	154.0	169.5	169.5	169.5	185.0	185.0	185.0	185.0	185.0	185.0	200.5	200.5	200.5	200.5	200.5	200.5	200.5

Rel. Humidity: 20 to 85% | Ambient Temp.: -10 to +60°C | Net Weight max. 1.91 kg

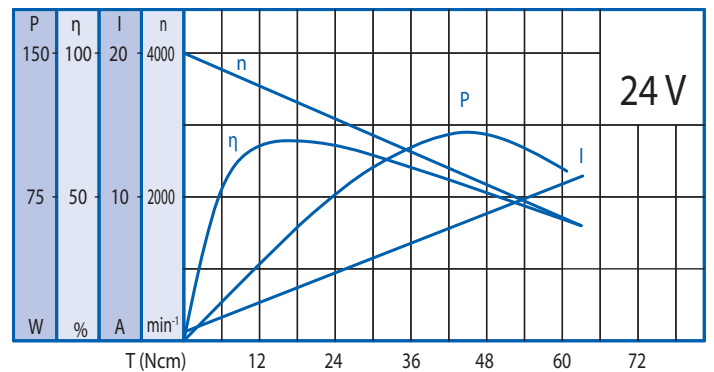
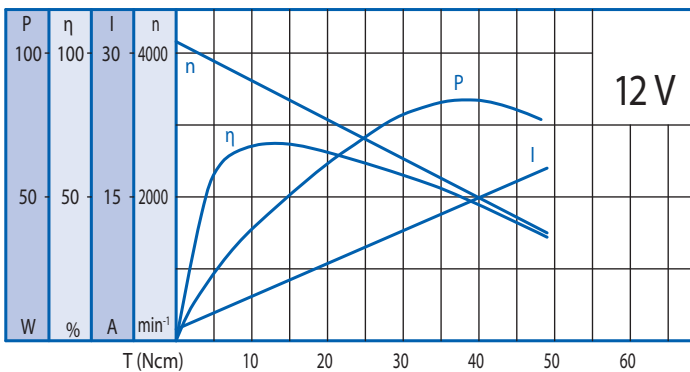


Options

Hi Power DC Motor
Encoder
Rear Shaft
EMC Filter
Leads
Connector
Special Shaft
Special Voltage

Motor

Rated Voltage (V)	Rated Torque (Ncm)	Rated Speed (min ⁻¹)	Rated Current (mA)	No Load Speed (min ⁻¹)	No Load Current (mA)	Rated Power (W)
12	9	3620	≤ 4100	4000	≤ 1200	33.5
24	13	3550	≤ 2850	4000	≤ 700	48.6



Gearbox

Helical Gearing

Gear Ratio	4	13	15	19	46	57	67	82	98	114	161	207	288	357	494	552	684
Max. Rated Torque (Ncm)	60	200	200	300	500	500	600	600	800	800	1000	1000	1000	1000	1000	1000	1000
Max. Peak Torque (Ncm)	180	600	600	900	1500	1500	1800	1800	2400	2400	3000	3000	3000	3000	3000	3000	3000

Ball Bearing

Radial Load (FR): 200 N (10 mm from face mounting) | Axial Load (FA): 100 N