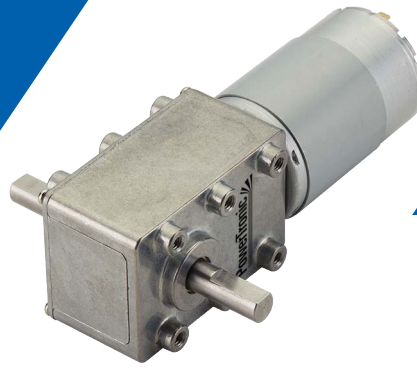


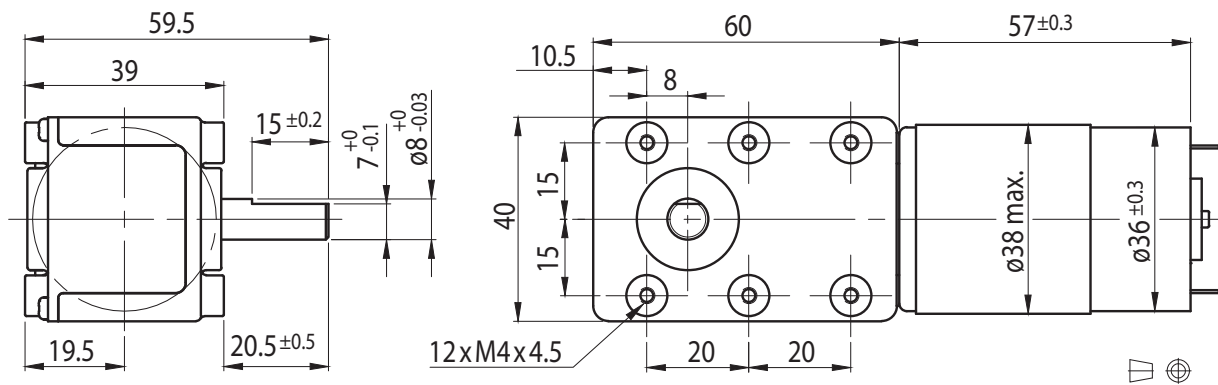
# DC Motor Right Angle Gearbox Type SN40.60-DC38.57



## Gearmotor

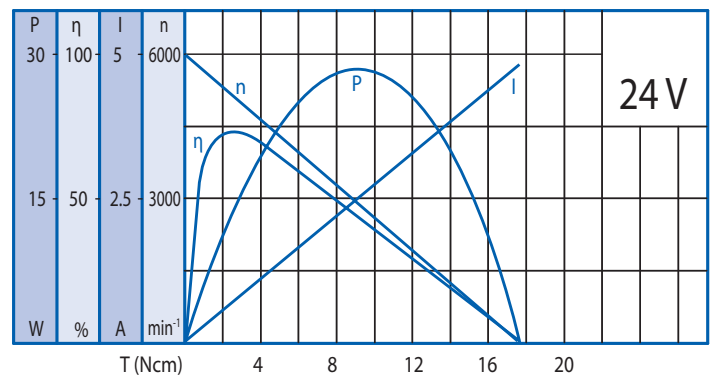
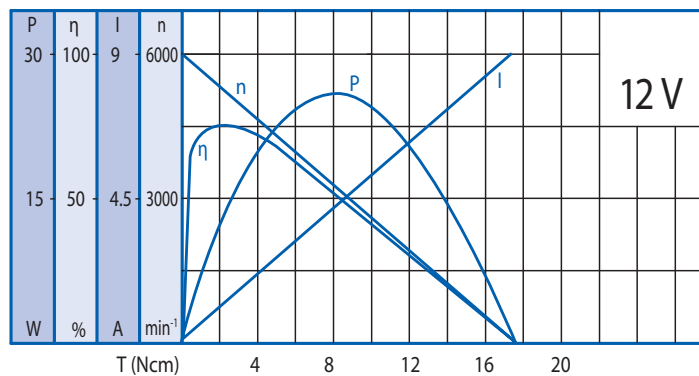
Gear Ratio		50	75	100	150	200	350	600	700	1050
12V	Rated Torque (Ncm)	20	30	40	60	80	100	200	200	200
	Rated Speed (min <sup>-1</sup> )	103	68.5	51.4	34.3	25.7	14.7	8.6	7.3	4.9
24V	Rated Torque (Ncm)	27	40	54	81	100	100	200	200	200
	Rated Speed (min <sup>-1</sup> )	103	68.5	51.4	34.3	25.7	14.7	8.6	7.3	4.9

Rel. Humidity: 20 to 85% | Ambient Temp.: -10 to +60°C | Net Weight 450g



## Motor

Rated Voltage (V)	Rated Torque (Ncm)	Rated Speed (min <sup>-1</sup> )	Rated Current (mA)	No Load Speed (min <sup>-1</sup> )	No Load Current (mA)	Rated Power (W)
12	2	5140	≤1600	6000	≤390	10.5
24	2.7	5140	≤1200	6000	≤210	15



## Ball Bearing

Radial Load (FR): 80 N (10 mm from face mounting)  
Axial Load (FA): 30 N

## Options

Encoder
Rear Shaft
EMC Filter
Leads
Connector
Special Shaft
Special Voltage