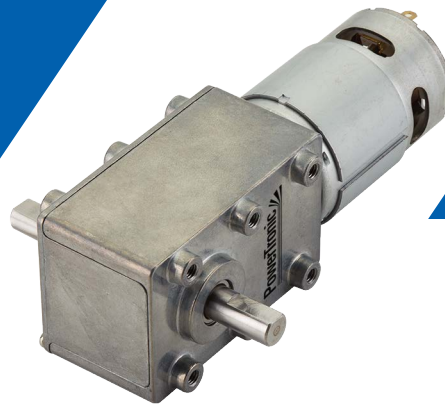


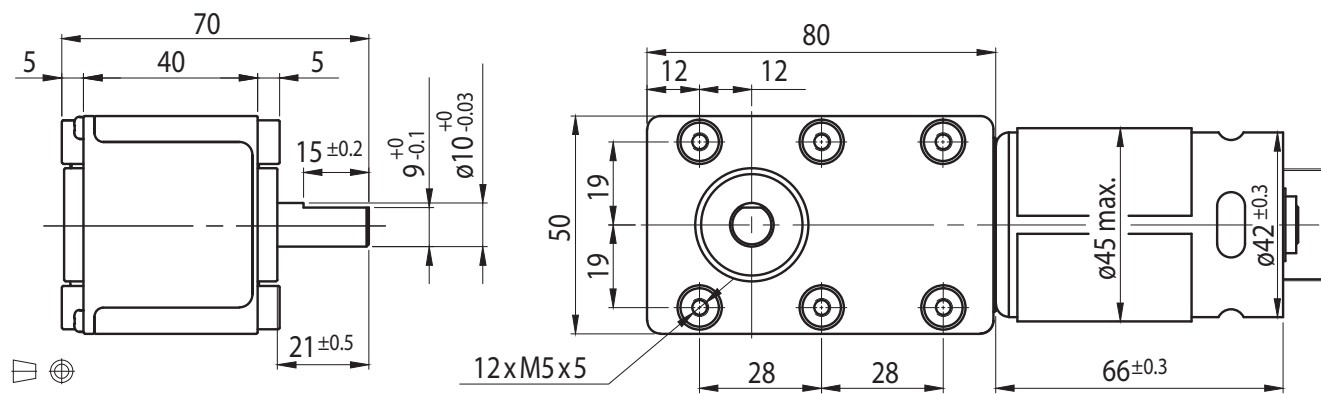
DC Motor Right Angle Gearbox Type SN50.80-DC45.66



Gearmotor

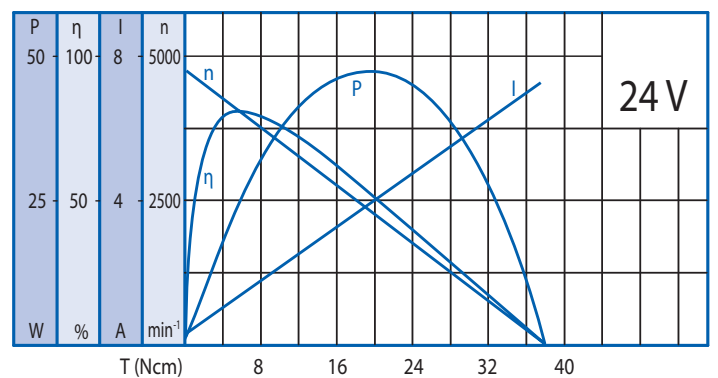
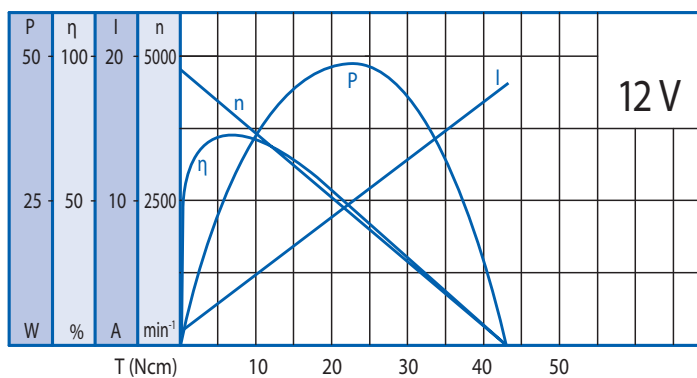
Gear Ratio		50	75	100	120	200	350	600	700	1050
12V	Rated Torque (Ncm)	61	91	122	146	244	300	400	400	400
	Rated Speed (min ⁻¹)	77	51.3	38.5	32	19.3	11	6.4	5.5	3.7
24V	Rated Torque (Ncm)	56	84	112	134	224	300	400	400	400
	Rated Speed (min ⁻¹)	77.8	51.9	38.9	32.4	19.5	11.1	6.5	5.6	3.7

Rel. Humidity: 20 to 85% | Ambient Temp.: -10 to +60°C | Net Weight 850g



Motor

Rated Voltage (V)	Rated Torque (Ncm)	Rated Speed (min ⁻¹)	Rated Current (mA)	No Load Speed (min ⁻¹)	No Load Current (mA)	Rated Power (W)
12	6.1	3850	≤2800	4600	≤2800	24.2
24	5.6	3890	≤1300	4600	≤1300	22.3



Ball Bearing

Radial Load (FR): 200 N (10mm from face mounting)
Axial Load (FA): 100 N

Options

Encoder
Rear Shaft
EMC Filter
Leads
Connector
Special Shaft
Special Voltage