

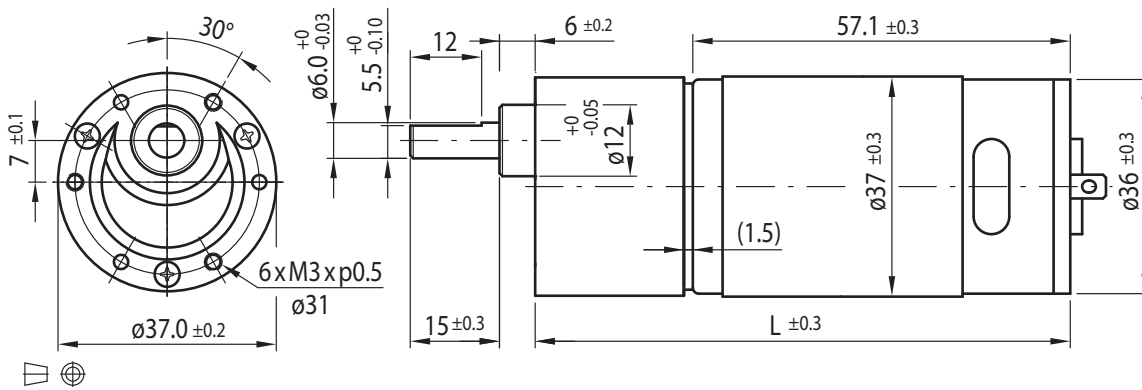
DC Motor Spur Gearbox Type ST37-DC36.57



Gearmotor

Gear Ratio		10	18	30	50	60	75	90	100	120	150	180	200	250	300	500	600	750	1000	1500	3000
12V	Rated Torque (Ncm)	10	10	20	30	30	40	40	60	60	60	60	60	60	60	60	60	60	60	60	60
	Rated Speed (min ⁻¹)	528	313	185	109	95	76	63	55	47	36	32	29	23	20	12	10	8	6	4	2
24V	Rated Torque (Ncm)	10	10	20	30	30	40	40	60	60	60	60	60	60	60	60	60	60	60	60	60
	Rated Speed (min ⁻¹)	532	315	186	111	96	77	64	56	48	36	32	30	23	20	12	10	8	6	4	2
Length L (mm)		76.6	79.1	79.1	81.6	81.6	81.6	81.6	81.6	84.1	84.1	84.1	84.1	84.1	84.1	86.6	86.6	86.6	86.6	89.1	89.1

Rel. Humidity: 20 to 85% | Ambient Temp.: -10 to +60°C | Net Weight max. 340g

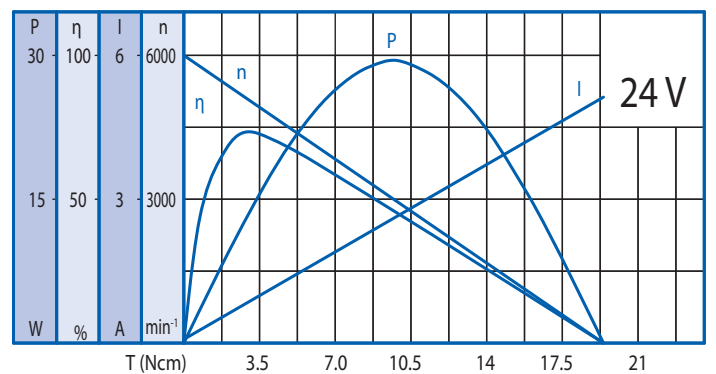
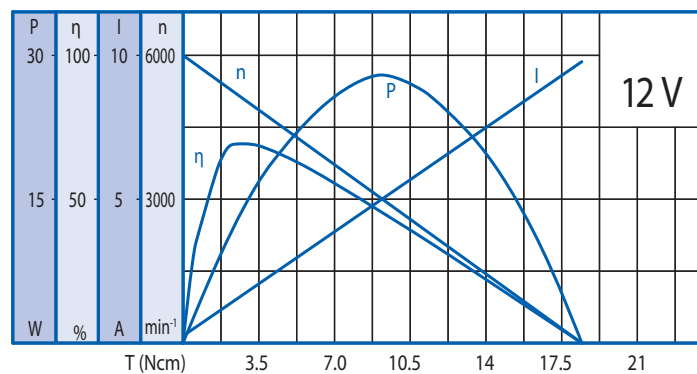


Options

Encoder
Rear Shaft
EMC Filter
Leads
Connector
Special Shaft
Special Voltage

Motor

Rated Voltage (V)	Rated Torque (Ncm)	Rated Speed (min ⁻¹)	Rated Current (mA)	No Load Speed (min ⁻¹)	No Load Current (mA)	Rated Power (W)
12	2.5	4930	≤1600	6000	≤250	12.8
24	2.4	5150	≤750	6000	≤130	12.7



Gearbox

Gear Ratio	10	18	30	50	60	75	90	100	120	150	180	200	250	300	500	600	750	1000	1500	3000
Max. Rated Torque (Ncm)	10	10	20	30	30	40	40	60	60	60	60	60	60	60	60	60	60	60	60	60
Max. Peak Torque (Ncm)	30	30	60	90	90	120	120	180	180	180	180	180	180	180	180	180	180	180	180	180

Radial Load (FR): 10N (10mm from face mounting) | Axial Load (FA): 7N