

BLDC Motor Type BL82R



Technical Data

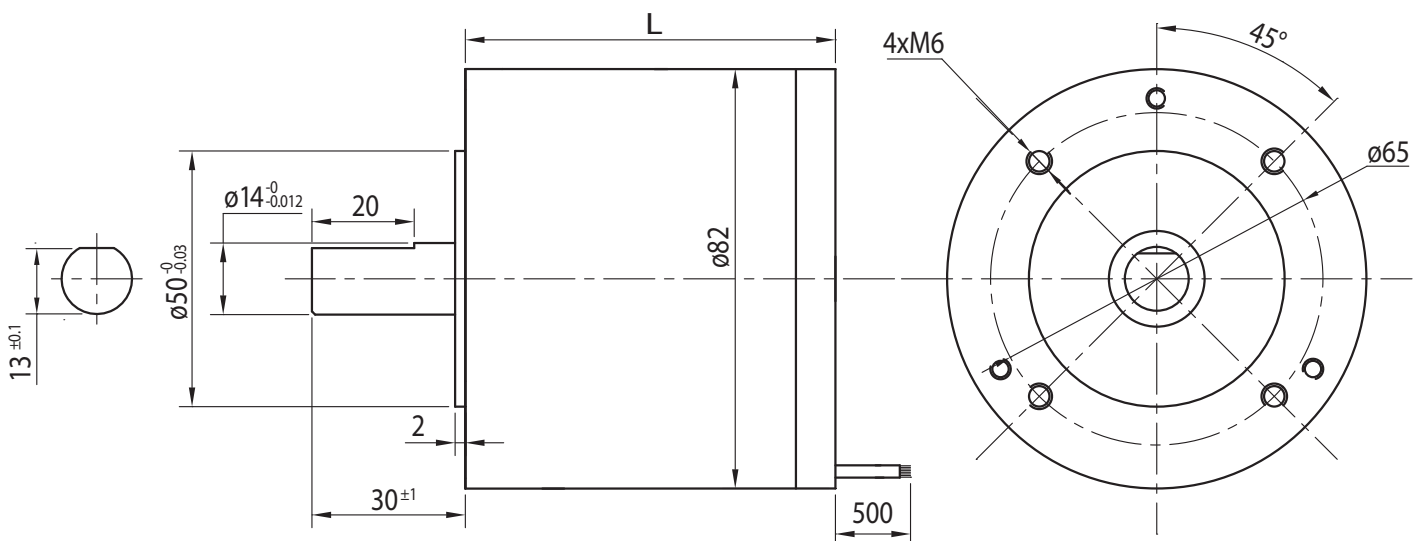
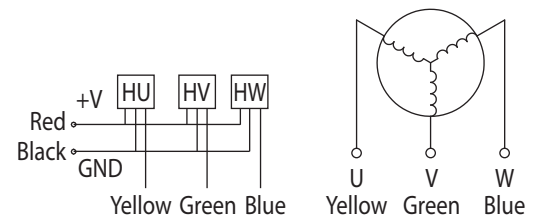
Model	BL82.80R	BL82.90R
Rated Voltage (V)	48	48
Rated Speed (min ⁻¹)	3000	3000
Rated Torque (Ncm)	60	80
Rated Power (W)	188	250
Rated Current (A)	5	7
Peak Current (A)	15	21
Peak Torque (Ncm)	180	240
Rotor Inertia (gcm ²)	600	700
Torque Constant (Ncm/A)	120	110
Resistance (Ω)	0.9	0.7
Inductance (mH)	0.7	0.5
Length (mm)	80	90
Net Weight (kg)	1.5	1.7
No. of Poles	8	
No. of Phases	3	
Insulation Class	B	

Rel. Humidity: 20 to 85% | Ambient Temp.: -20 to +50°C

Connections

UL1007 AWG26	
Red	Vcc
Yellow	Ha
Green	Hb
Blue	Hc
Black	GND

UL3266 AWG18	
Yellow	U
Green	V
Blue	W



Options

Encoder	Special Shaft
Rear Shaft	Special Voltage
Connector	Insulation Class F/H