

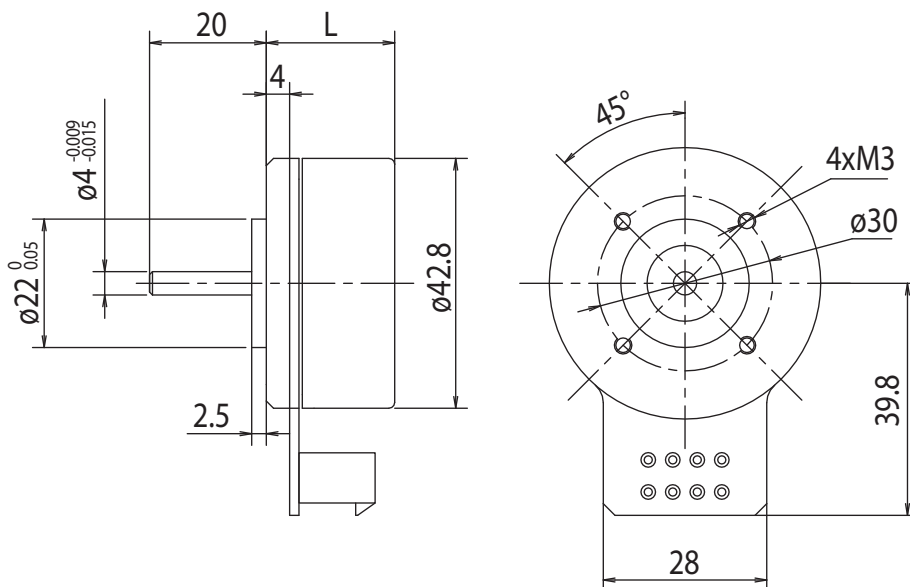
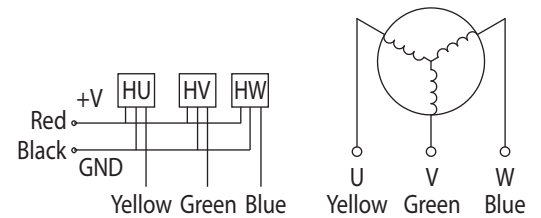
BLDC Motor Type BL43



Technical Data

Model	BL43.21	BL43.26	BL43.31
Rated Voltage (V)	24	24	24
Rated Speed (min ⁻¹)	5000	5000	5000
Rated Torque (Ncm)	6	10	13
Rated Power (W)	35	50	70
Rated Current (A)	2.2	3.2	4.4
Peak Current (A)	6.6	9.6	13.2
Peak Torque (Ncm)	18	30	39
Rotor Inertia (kg/cm ²)	0.13	0.23	0.33
Torque Constant (Ncm/A)	3	3	3
Back EMF (V/min ⁻¹)	2.8	2.8	2.8
Resistance (Ω)	2.0	1.5	1.0
Inductance (mH)	1.5	1.0	0.5
Length (mm)	21.3	26.3	31.3
Net Weight (kg)	0.12	0.18	0.24
No. of Poles	16		
No. of Phases	3		

Rel. Humidity: 20 to 85% | Ambient Temp.: -20 to +50 °C



Options

Rear Shaft	Special Voltage
Special Shaft	Gearbox