

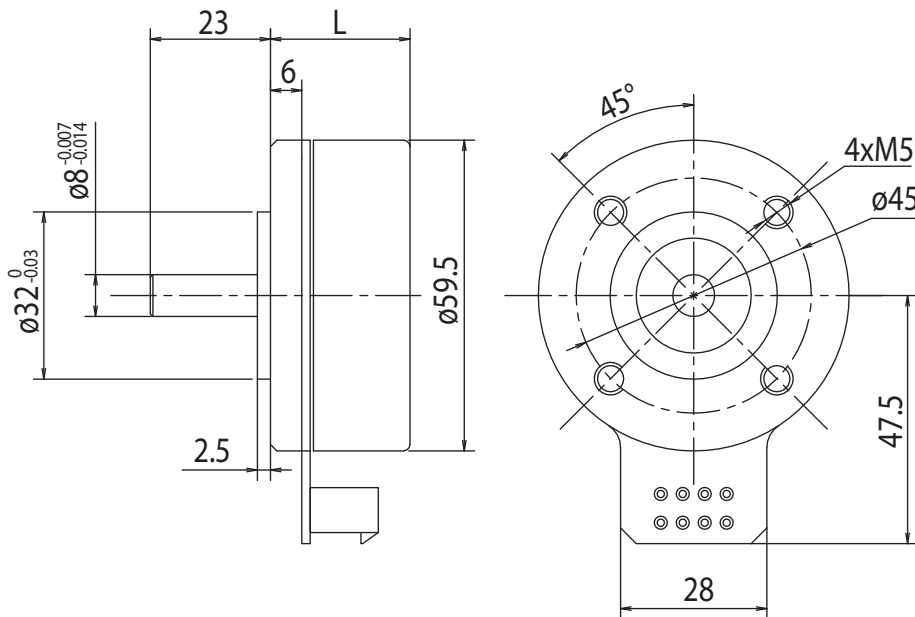
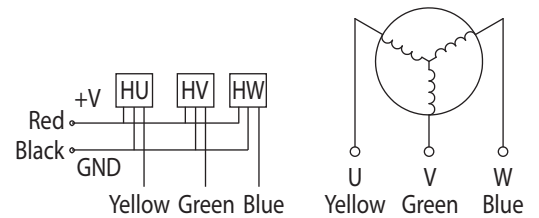
BLDC Motor Type BL60



Technical Data

Model	BL60.26	BL60.31	BL60.36
Rated Voltage (V)	24	24	24
Rated Speed (min ⁻¹)	3000	3000	3000
Rated Torque (Ncm)	15	20	30
Rated Power (W)	45	60	90
Rated Current (A)	2.9	3.8	5.8
Peak Current (A)	8.7	11.4	17.4
Peak Torque (Ncm)	45	60	90
Rotor Inertia (kg/cm ²)	0.7	1.0	1.3
Torque Constant (Ncm/A)	5	5	5
Back EMF (V/min ⁻¹)	4.5	4.5	4.5
Resistance (Ω)	0.7	0.45	0.2
Inductance (mH)	0.25	0.15	0.1
Length (mm)	26.3	31.3	36.3
Net Weight (kg)	0.3	0.4	0.5
No. of Poles	16		
No. of Phases	3		

Rel. Humidity: 20 to 85% | Ambient Temp.: -20 to +50 °C



Options

Rear Shaft	Special Voltage
Special Shaft	Gearbox